

GAIL HALVORSEN: THE BERLIN CANDY BOMBER



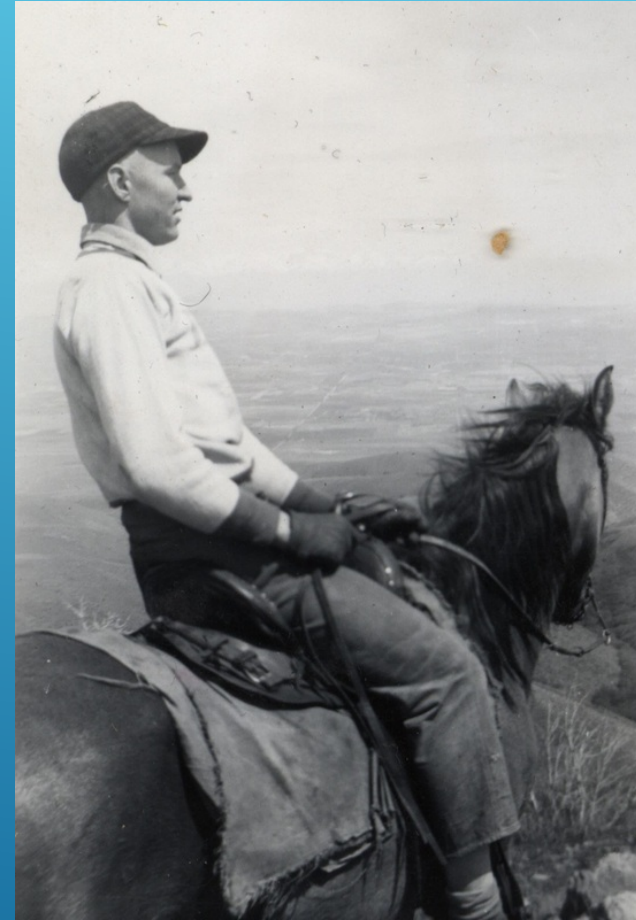
DISCLAIMER

The views presented in this discussion are the sole product of the Author, and do not represent official doctrine, policy, tenets, etc., of the Church of Jesus Christ of Latter Day Saints, the US Department of Defense, the United States Air Force, the Civil Air Patrol, Intermountain HealthCare, Brigham Young University, Utah Valley University, or anyone else I have worked for, worked with, have employed, or anyone I have spoken to in the past 45 years.



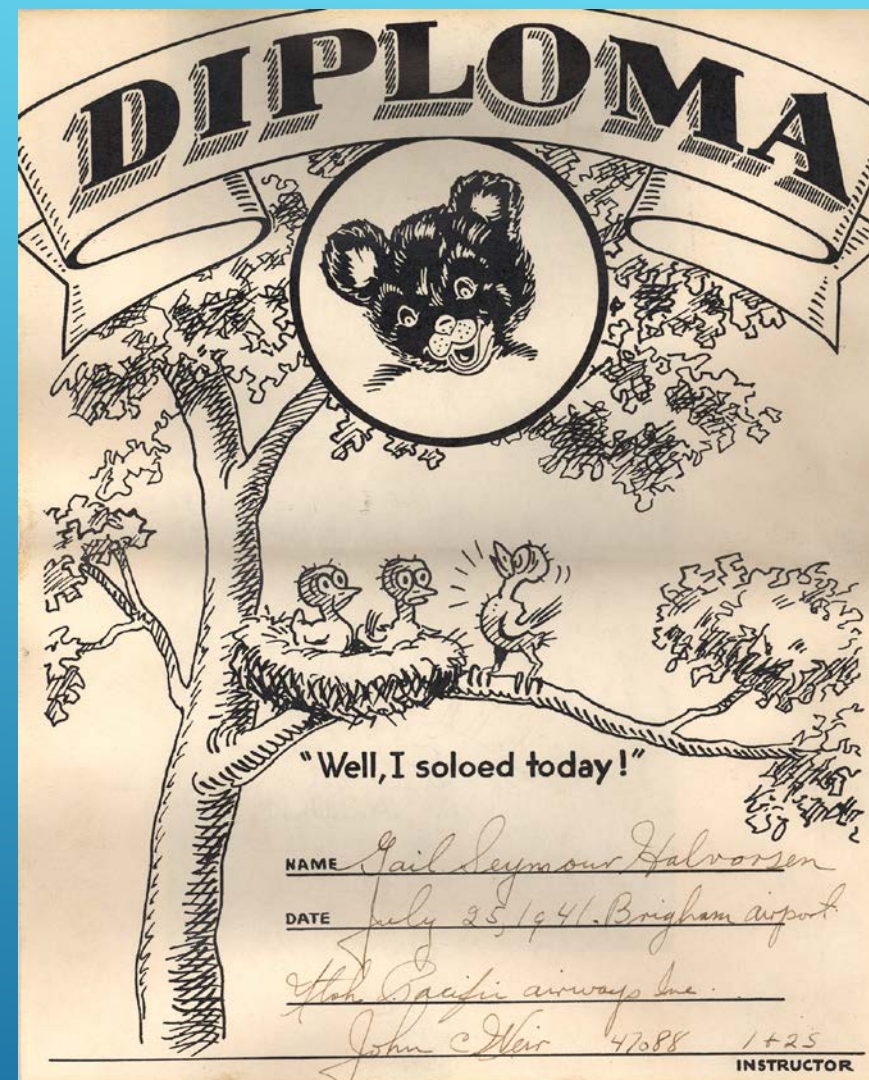


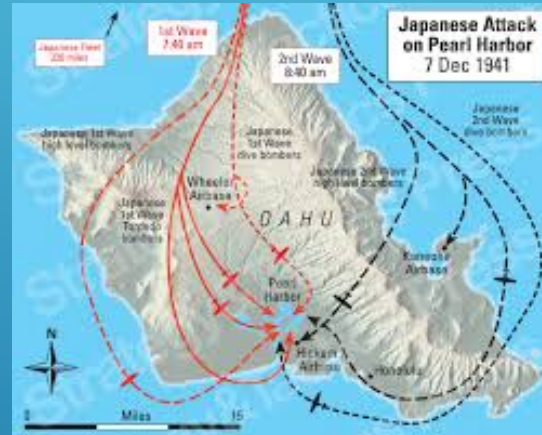








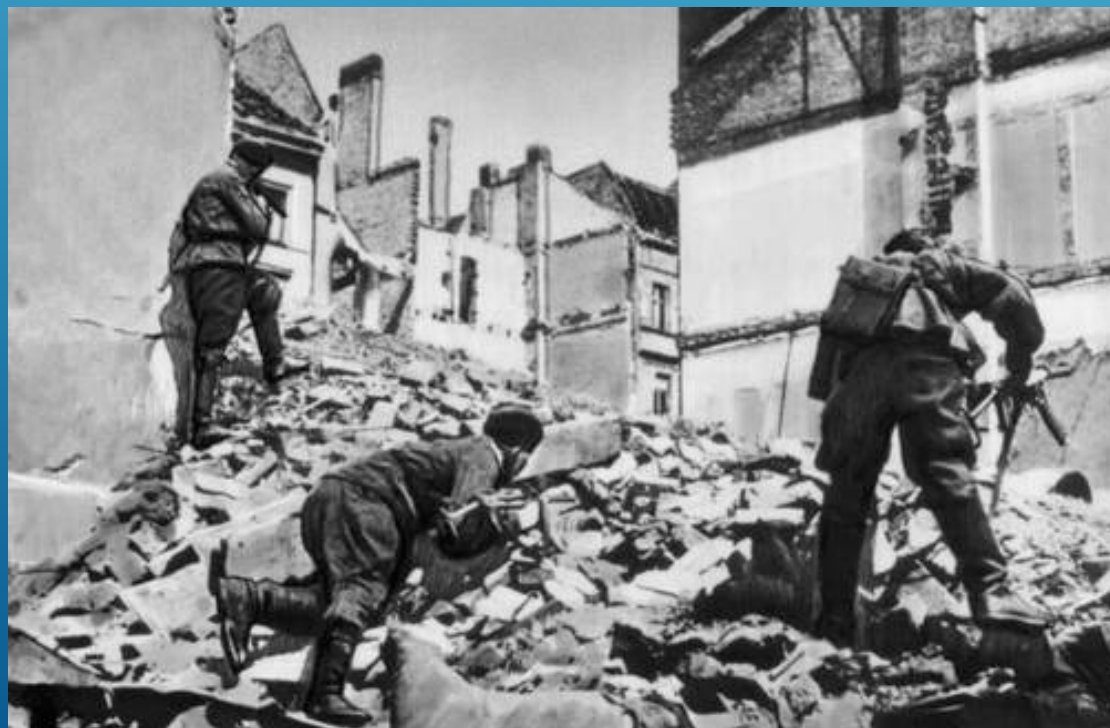


















SOVIET ORDERS NEW CURBS AS TRAFFIC ON BERLIN ROUTE STARTS

UN ADMITS ISRAEL WITH 37-12 VOTE

Arab Bloc Walks Out in Protest But Later Delegates Return

New York, May 11 (AP)—Israel was admitted to the United Nations last night on the 37-12 vote. The Arab bloc walked out of the general assembly in protest against the admission but later delegates returned.

The vote admitting Israel was 37-12, with 13 abstentions. The Arab bloc walked out of the assembly at 11:30 p. m. and returned at 1:30 a. m.

Continued on Page 17

BELIEVE EISLER HAS FLED U. S. AS SHIP STOWAWAY

Man With Same Name Is Found On Liner as It Nears England

Washington, May 11 (AP)—The Justice Department announced tonight it has received reports that a man with the same name as the man believed to be the stowaway on the ship, the *SS Emsland*, was found on the ship.



OPEN WAY FOR FIRST TRAIN—German railway workers at Helldorf remove wooden barrier, opening way for the first train as the Soviet traffic blockade of Berlin ended.

RUSSIANS WILL KEEP CONTROL OVER FREIGHT

Reds to Restrict Volume In and Out of Berlin; Insist On Using Own Engines and Crews; Anglo-American Airlift Continues as Safe-guard for German People

Berlin, Thursday, May 12 (AP)—A Soviet-American military train chugged into Berlin at 10:30 a. m. today (May 11). Soviet tanks and trucks followed, carrying the last load of the Berlin blockade of Berlin.

The train, moving ahead of schedule, crossed from the Soviet zone into the city before dark, passing through the city walls, moving toward a downtown station.

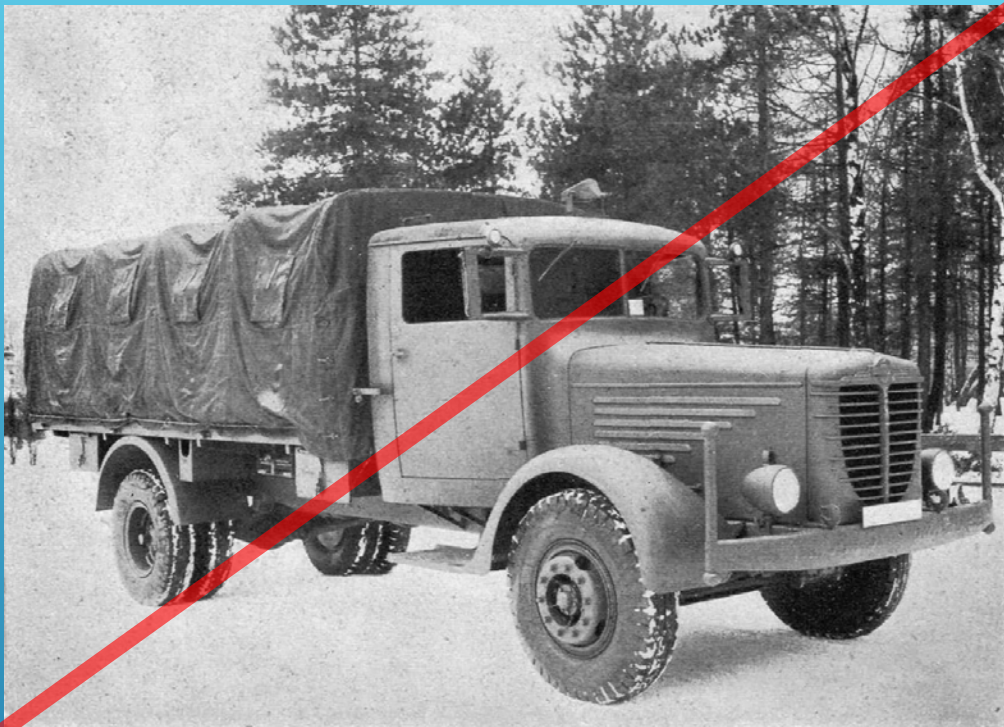
The train's arrival completed the lifting of the city's 11-month-old blockade.

Berlin, May 12 (The Associated Press)—The first Soviet train to enter the city since the blockade began in 1948 arrived today. The train, carrying Soviet tanks and trucks, was the first of a series of trains that will be sent to the city.

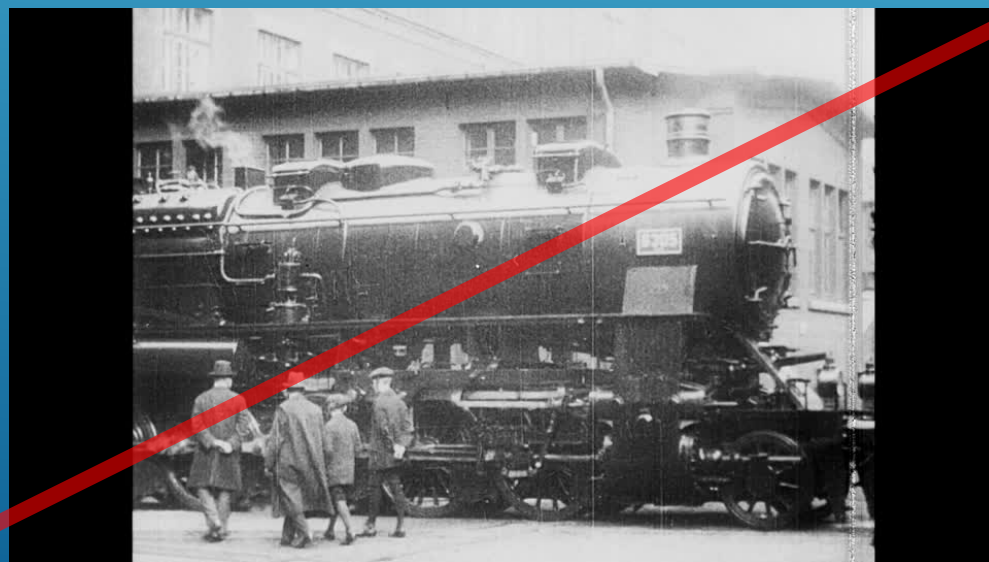
The train's arrival was the first step in the lifting of the city's 11-month-old blockade. The train was the first of a series of trains that will be sent to the city.

COUNTY LEGION FIGHTS CLOSING OF VA OFFICE

Ways to Educate Public In Safety Are Discussed



Bundesarchiv, Bild 10111-MN-1369-10A
Foto: e. Ang. | 1940

















How Many Pick-up Truck Loads of Candy Did They Drop?







1948-49
Berlin Airlift

1945
End of WWII
Partition of Berlin

1962
Second Berlin Crisis
"Ich bin ein Berliner"



1987
"Mr. Gorbachev,
Tear Down this Wall"

1989
Fall of the
Berlin Wall



1990
Reunification of
Germany

